

Cognitive PRINTING SOLUTIONS INC. SOLUTIONS TAKE A CLOSER LOOK!



PORTABLE

CODE COURIER

4" PORTABLE POWER

Code Courier direct thermal and thermal transfer portable printers offer the flexibility to print large labels and maintain a compact form factor.

With a full suite of on-board bar codes, including high density two dimensional codes and a rich text font selection, Code Courier printers are suitable for field service, forklift and other mobile applications. The Code Courier battery will print all day at a normal 30% duty cycle.



Options: Forklift-ready, IrDA wireless, Thermal Transfer.

Code★Ranger

ROUGH AND RF READY

Code Rangers are heavy-duty, light-weight portable printers with a unique modular design that maximizes productivity, anywhere!

The NiMH battery lasts for a full eight hour shift. A virtually impenetrable shell and available weatherproof carrying case assure great performance in tough conditions. The sleek design and attractive colors complement environments as diverse as retail and industrial. Wireless options available.



Options: Peeler, 802.11 and 802.11b wireless, IrDA wireless, 2.0" or 3.125" OD media, Multi-printer chargers, linerless.

Code Express

MOBILE RECEIPT PRINTER

With a wide range of options, it is sure to meet your every need. With internal fast charge circuit and multiple media options, productivity will be positively impacted. It's so simple to use, your error rate is greatly reduced. And because it's so durable, it will last a lot longer, so there's less need to replace it.



Includes: Battery charger, belt loop carrier and sample media

Options: Magnetic card reader, IRDA, bluetooth

DESKTOP

Advantage LX

HEAVY DUTY DESKTOP SERIES

The Advantage LX has all of the features you've come to expect from Cognitive (durability, reliability, high performance) - and much more! This small footprint printer, with a rugged metal print mechanism, provides "big box" thermal printer performance. The Advantage LX is twice as fast, has increased DRAM for larger file transfers, and 4 MB of memory to store preloaded sets of 2-D barcodes, international fonts, and more objects



Options: Cutter, Peeler, Thermal Transfer 300 dpi, e+Solutions Ethernet, linerless.

Del Sol LX

ECONOMICAL DESKTOP SERIES

The Del Sol LX is economical and easy to use. Now with faster throughput, increased DRAM, and more memory than ever, it really delivers. The built-in metal tear bar is a real plus! The Del Sol LX is also user-configurable to hold a 7" ODE (500 foot long) media roll for maximum label-printing capacity and minimal downtime.



Options: Cutter, Peeler, Thermal Transfer, 300 dpi, e+Solutions Ethernet.

4403 Table Mountain Drive, Suite A
Golden, Colorado 80403
Tel: 1-303-273-1400 • Toll free: 1-800-525-2785
Fax: 1-303-273-1414 • email: sales@cognitive.com
www.cognitive.com

Cognitive

SOLUTIONS INC. PRINTING SOLUTIONS

NETWORK PRINTERS

Code★Ranger

WIRELESS PORTABLE PRINTING

Code Ranger wireless series printers provide cable-free convenience without sacrificing printer performance. Choose between the Symbol Spectrum 24 802.11 Frequency Hopping option or WiFi 802.11b Direct Sequence RF communications. All RF printers include a more powerful 1600mAh battery, charger, configuration instructions and software.



Options: 802.11, 802.11b, IrDA, 2.0" or 3.125" OD media.

e+Solutions™

EASY-TO-USE NETWORK PRINTERS

Only Cognitive e+Solutions printers provide built-in Ethernet ports for fast and easy configuration, plus a host of versatile software products for quick installation time and increased versatility. Available in the industrial Advantage LX printer series and the economical Del Sol LX printer series, e+Solutions are "Ethernet made easy" printing solutions.



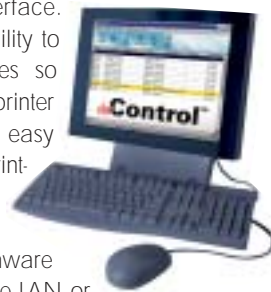
Available Printers: Blaster Advantage and Del Sol 2", 4", direct thermal and thermal transfer printers.

SOFTWARE

inControl™

NETWORK PRINTER MANAGEMENT SOFTWARE

Designed for network administrators by network administrators, *inControl* software presents critical network information in an intuitive graphical interface. *inControl* has the ability to create printer profiles so that adding a new printer to the network is as easy as plugging in the printer and clicking a few



buttons. Upload firmware to every printer on the LAN or WAN. *inControl* puts the network administrator in control of all Cognitive e+Solutions printers.

Options: Standard *inControl* ships free with printers, ask about free *inControl* Gold.



PROGRAMMABLE PRINTER INTELLIGENCE

Data Direct opens the doors of barcode printing to a whole new world of possibilities, enabling Cognitive printers to communicate with virtually any data source. Data Direct filters the incoming data from standard barcode scanners, host systems, keyboards, weigh scales and a diverse variety of other devices. The result is the Cognitive printer can print a label, receipt, or tag in virtually any format, printed from virtually any device. Alleviates host-side programming or additional hardware costs.



Applications: Keyboard, scanner, scale, forms printing, supplement/replace outdated. impact printer.



THE PROFESSIONAL LABELING SOFTWARE

NiceWare software enables any organization to quickly and easily implement automatic identification and data collection (AIDC) software solutions on the desktop PC and beyond. Whether your AIDC software requirements are on the PC, on the corporate server or in the mobile enterprise, NiceWare software can help.



The latest novelties and improvements introduced with new generation of NiceLabel have raised many new labeling opportunities and benefits. Contact Cognitive for your AIDC software solution.

For additional information about Cognitive products, contact our offices or visit our website at www.cognitive.com

USA

Cognitive Solutions Inc.
4403 Table Mountain Dr Suite A
Golden, CO 80403
Tel: +1 303 273 1400
Toll free: +1 800 525 2785
Fax: +1 303 273 1414
sales@cognitive.com

EUROPE

Maxatec*
Atlantic Street
Altrincham, Cheshire
WA14 5QJ UK
Tel: +44 161 942 7850
Fax: +44 161 927 7664
europesales@cognitive.com

ASIA-PACIFIC

DH Technology*
PO Box 726
Level 3, 39 Leighton Place
Hornsby NSW 2077 Australia
Tel: +61 2 9477 1999
Fax: +61 2 9477 1453
asiasales@cognitive.com

JAPAN

CJP*
2-23-2 Higashi-Ikebukuro
Toshima-KU
Tokyo 170 Japan
Tel: +81 35 391 7689
Fax: +81 35 391 7692
japansales@cognitive.com

Copyright © 2004, Cognitive. All rights reserved. Code Courier®, Code Ranger®, Blaster Advantage™, e+Solutions, Data Direct, inControl, are a trademarks of Cognitive. Specifications, dimensions, and diagrams are subject to change without notification. Windows® is a registered trademark of Microsoft Corporation. AGFA® is a registered trademark of Miles, Inc.

